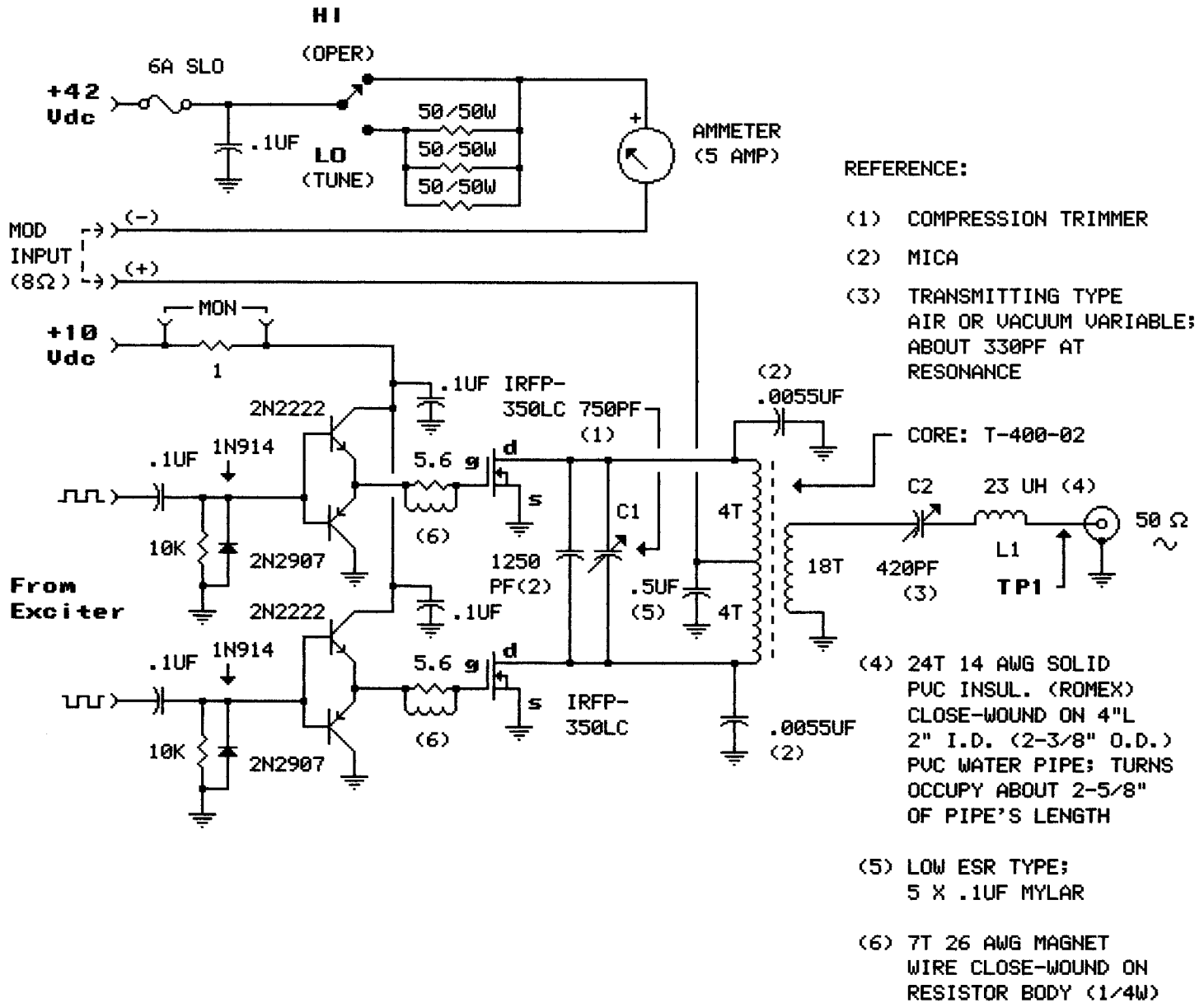
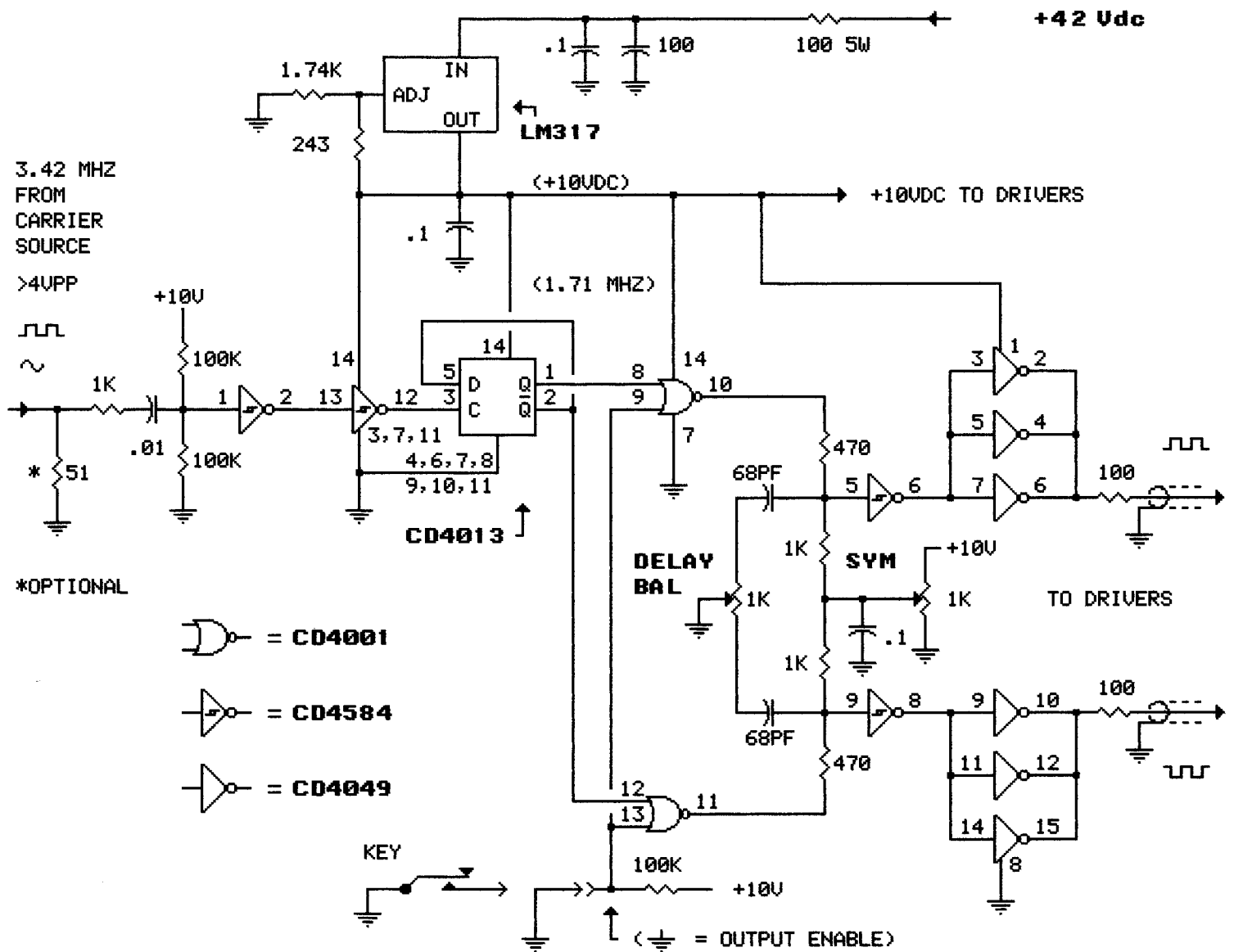


(Figure 1)
200W/1710 kHz Transmitter
Driver/Class-E Output Stage
(AS-BUILT)



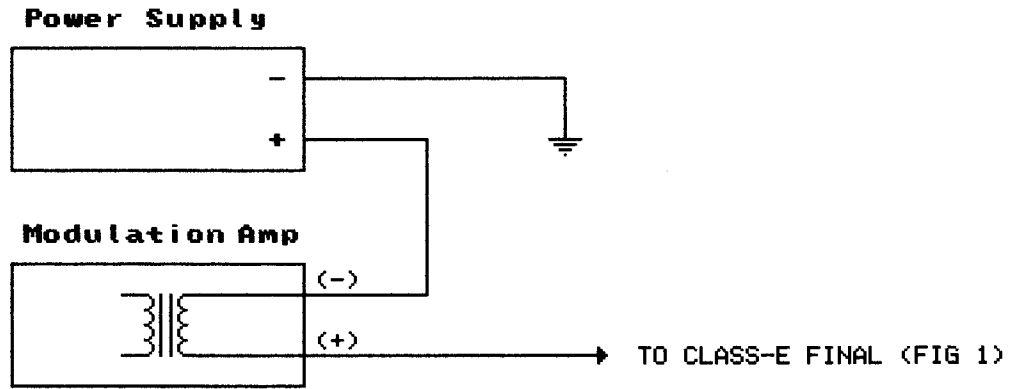
(Figure 2)
1.71 MHz Transmitter
Push-Pull Exciter
 (AS-BUILT)



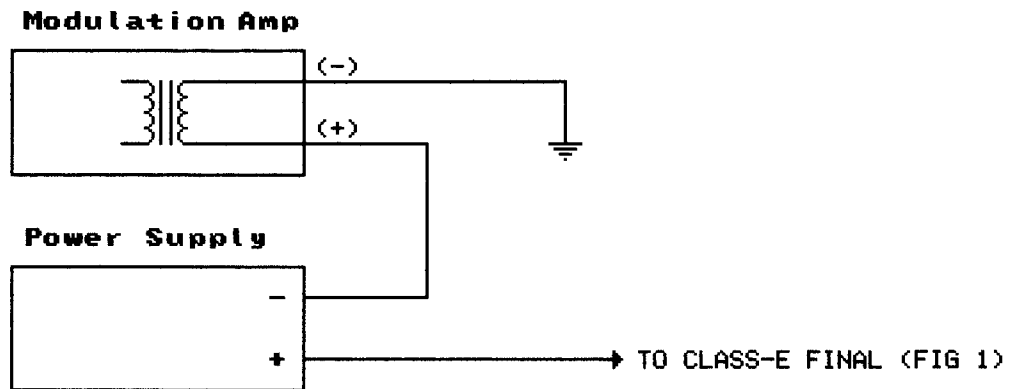
(Figure 3)

Modulator Connection Options

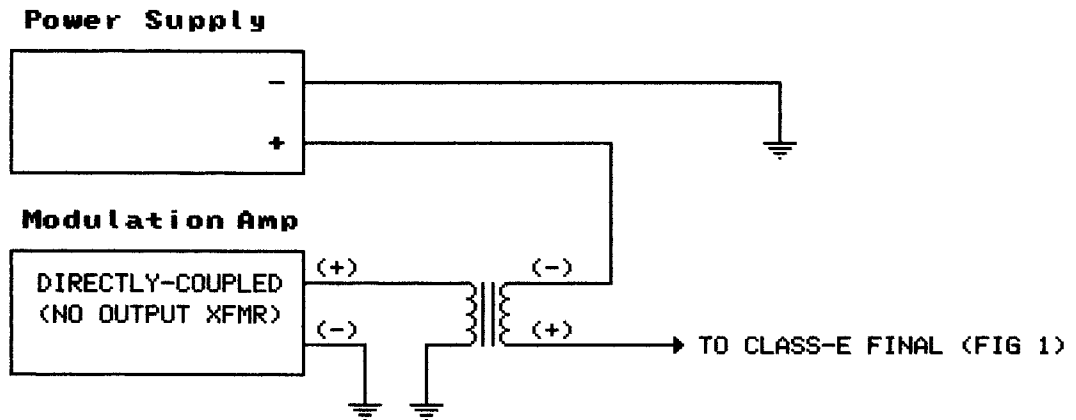
- #1 **Non-Isolated Power Supply /
Isolated Transformer-Coupled Modulation Amplifier
(AS-BUILT CIRCUIT)**



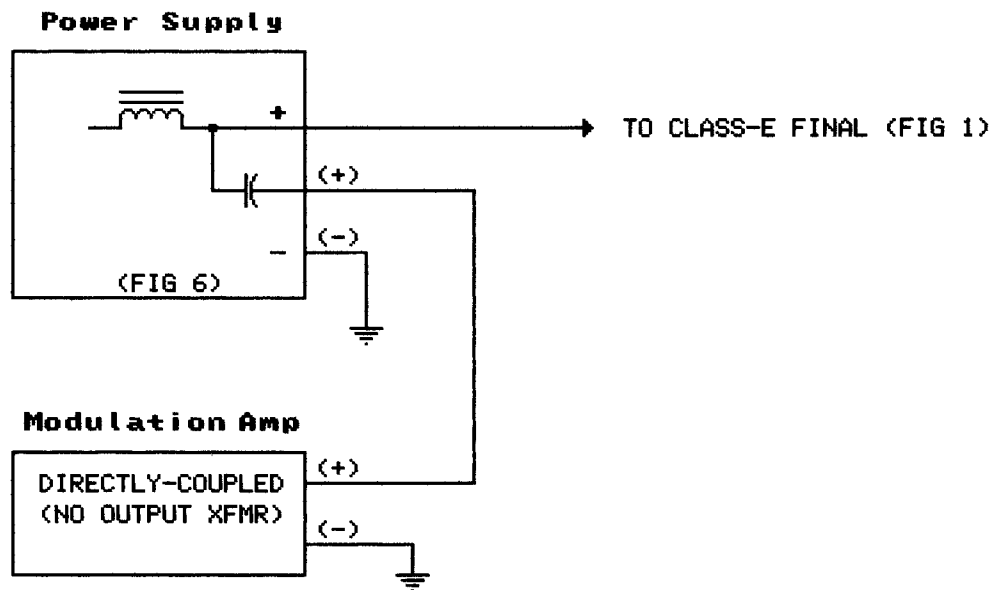
- #2 **Isolated Power Supply /
Non-Isolated Transformer-Coupled Modulation Amplifier**



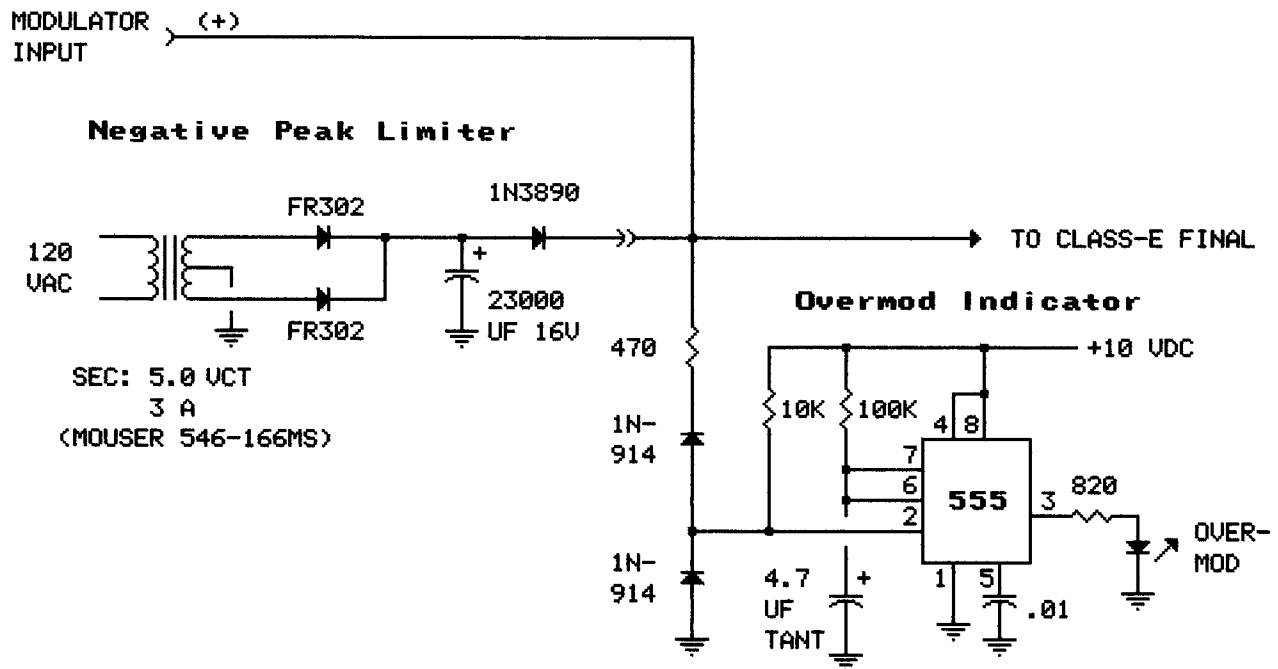
- #3 **Non-Isolated Power Supply /
Non-Isolated Transformerless Modulation Amplifier /
External Isolation Transformer**



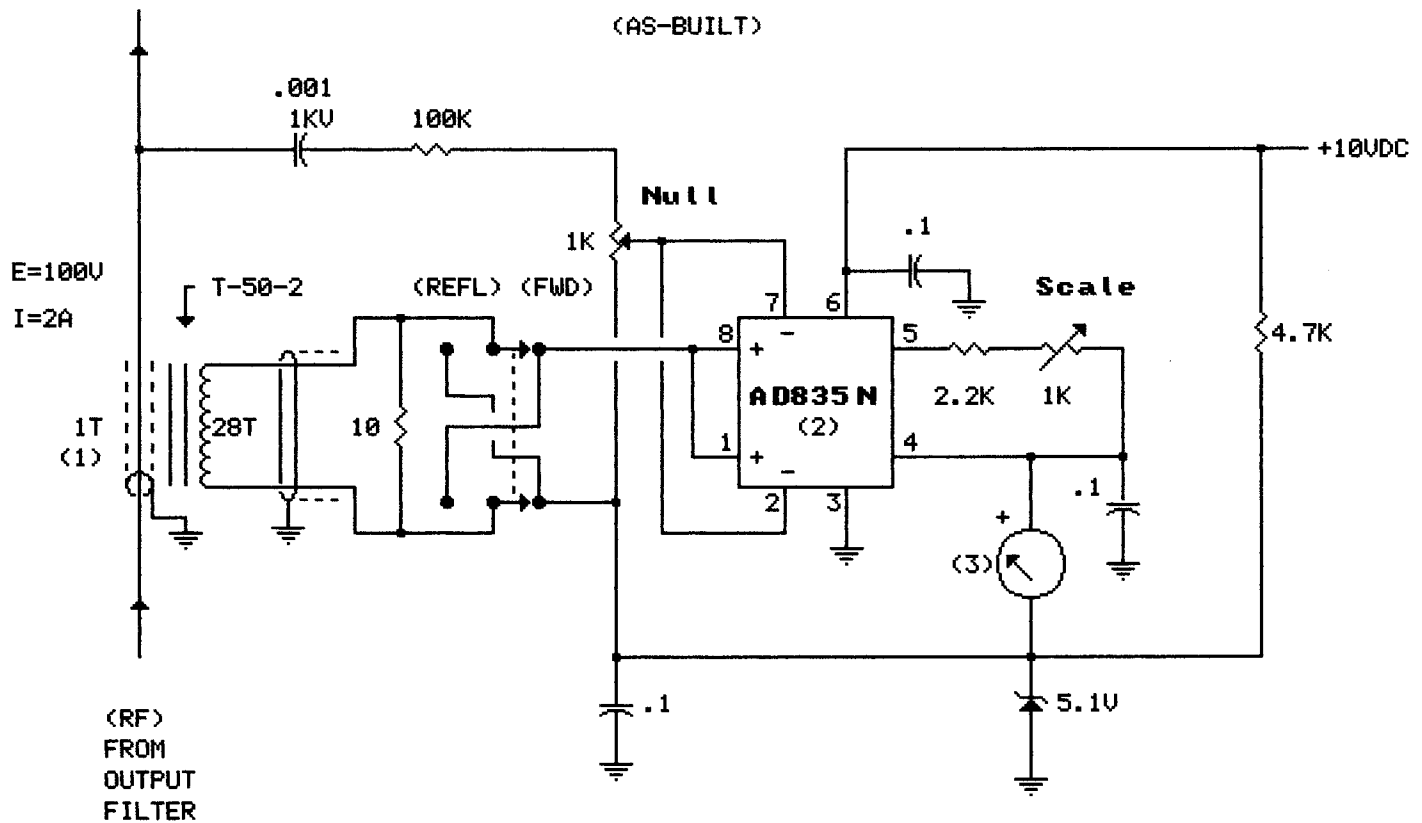
**#4 Non-Isolated Transformerless Modulation Amplifier/
Transformerless Connection (Modified Heising)**



(Figure 4)
**Negative Peak Limiter
Overmod Indicator**

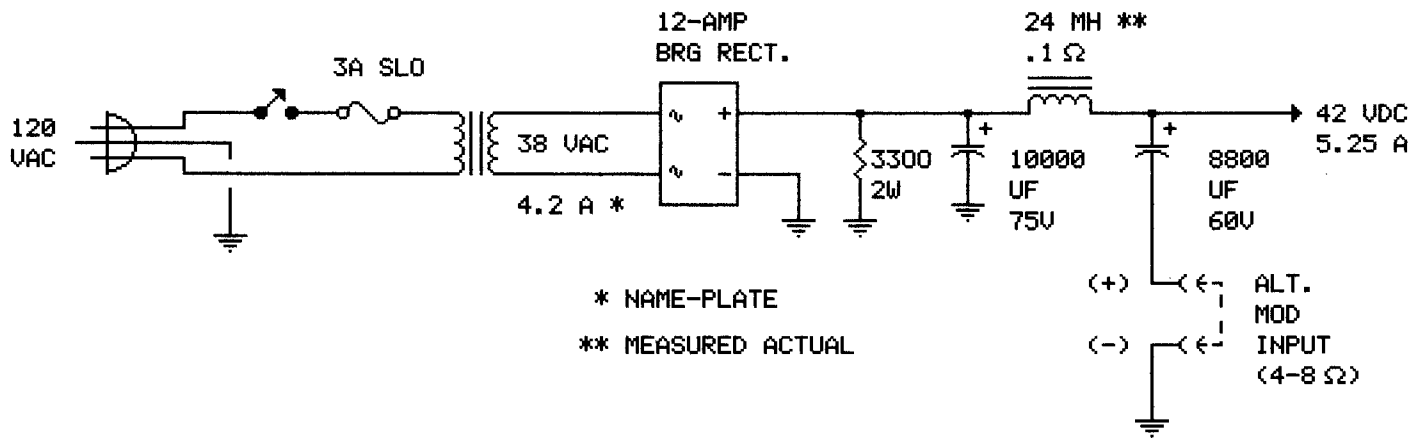


(Figure 5)
Linear Scale
Directional Wattmeter
 (AS-BUILT)



- (1) PRIMARY: INSULATED WIRE PASSED THROUGH CENTER OF CORE; SHIELDING: 1.25" COPPER FOIL WRAPPED AROUND PRIMARY WIRE, GROUND AT ONE END ONLY
- (2) 250 MHZ 4-QUADRANT MULTIPLIER, ANALOG DEVICES, WWW.ANALOG.COM
- (3) SCALE 0-300 WATTS (LINEAR)
 FULL SCALE CURRENT = 1 MA DC
 CURRENT AT 200 WATTS = .67 MA DC

(Figure 6)
42V / 5.25A Power Supply
For 200W Class-E Transmitter
 (AS-BUILT)



(Figure 7)

1710 kHz Transmitting Antenna

(NOT TO SCALE)

